



Chhattisgarh Unified Industrial Portal

Government of Chhattisgarh

User Manual

For

Corporate Social Responsibility

(Company)

Table of Contents

1. Overview	1
2. How to Get Started	1
3. Corporate Social Responsibility.....	1
4. How to Register & Login for Company User's.....	2
4.1. Registration	2
4.2. Login	4
4.3. CSR Projects	4
4.3.1. How to Show Interest.....	5
4.4. Interested Projects.....	8

1. Overview

Corporate Social Responsibility (CSR) is a company's commitment to conducting its business in an honest, transparent, and ethical manner while actively contributing to the welfare of society. It involves supporting economic growth, creating positive social impact, and improving the quality of life of employees, local communities, and the public at large.

CSR encourages organizations to go beyond profit-making by taking responsibility for their actions and contributing to sustainable development. It focuses on maintaining a balance between business success and responsibilities toward society, environmental protection, and overall economic progress.

2. How to Get Started

Enter the website URL (<https://invest.cg.gov.in>) in the browser and the page navigates to the landing page of the One Click –Single Window System.

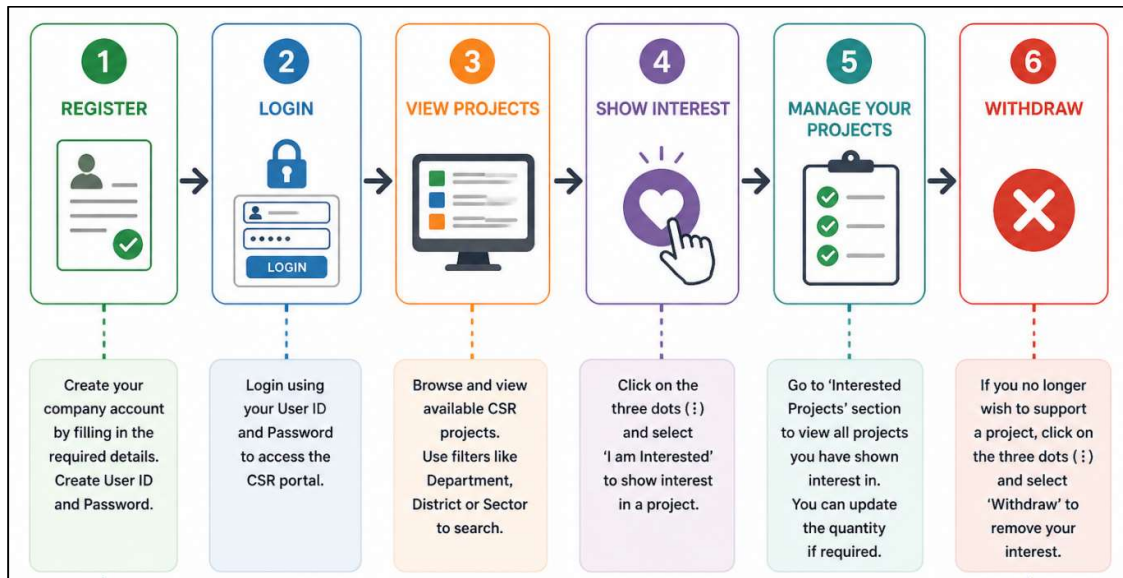


Figure 1: Homepage Screen

3. Corporate Social Responsibility

Corporate Social Responsibility (CSR) is when a company takes responsibility to support society and protect the environment. It includes activities like helping communities, following ethical practices, and promoting sustainability.

Company User Workflow:



4. How to Register & Login for Company User's

To access CSR functionalities, users must first register on the portal. After successful registration, users can log in using their credentials.



Figure 4.1: CSR Login

4.1. Registration

Click on the register link to register by filling the required details.

Figure 4.2: Login Screen

After clicking the **Register** option, the company registration form appears in the system. The user fills in all the required details and creates the login credentials.

Figure 4.3: Registration Form

4.2. Login


After successfully registering, the user can log in to the Corporate Social Responsibility (CSR) portal after entering their user id and password as shown Fig. 4.4.

Login to your account

Don't have an account? [Register](#)

User ID

Password

I'm not a robot 

[Login](#)

[Forgot Password?](#) [Back to Home](#)

Figure 4.4: Login Page

4.3. CSR Projects

In the CSR Projects section, the user can view the department-wise and district-wise CSR project listing details. A company can add or modify the quantity, associated with a CSR project and express its interest for the same.

Project Listing Filter ▾

S. No.	Department	Sector	Project	District	Total Quantity	Remaining Quantity	Add Quantity	Published By	Action
1	Culture Department	Heritage, Art & Culture	Guidance program to support Category : Services	Balod	1	0	- +	District Balod	⋮
2	Public Health and Family Welfare Department	Healthcare & Sanitation (Preventive & Curative)	Cataract Screening Camp Category : Services	Bastar	1	0	- +	District Bastar	⋮
3	Tourism Department	Environment and Sustainability	Trash Cans in Tourist Spots Category : Product	Bastar	20	14 Interested: 6	- +	District Bastar	⋮

Figure 4.5: CSR Project Listing

The user can search the CSR project list through the filter section, such as by department, district and CSR sector as shown in figure 4.6.

Figure 4.6: Filter Screen

4.3.1. How to Show Interest

The user clicks the three dots to take action on CSR projects.

- On click of **VIEW** button company users will be able to view the project details.

S. No.	Department	Sector	Project	District	Total Quantity	Remaining Quantity	Add Quantity	Published By	Action
1	Culture Department	Heritage, Art & Culture	Guidance program to support Category : Services	Balod	1	0	- +	District Balod	⋮
2	Public Health and Family Welfare Department	Healthcare & Sanitation (Preventive & Curative)	Cataract Screening Camp Category : Services	Bastar	1	1	- +	District Bastar	View I'm Interested Update Withdraw
3	Tourism Department	Environment and Sustainability	Trash Cans in Tourist Spots Category : Product	Bastar	20	14 Interested: 6	- +		

Project Preview

Project Details

Department: Public Health and Family Welfare Department

Category: Services Project Title: Cataract Screening Camp Sector: Healthcare & Sanitation (Preventive & Curative)

Location Type: Rural

District	Block	Tehsil	Village / Town	Total Estimated Cost (₹)
Bastar	Jagdalpur	Jagdalpur	Nagarnar	50,000.00

Project Description: Cataract screening program to identify and reduce preventable blindness in rural populations.

Figure 4.8: Company View Screen

- On click of **I am Interested** button company users will be able to show interest in the projects that they would be interested on.

CSR Projects > Interested Projects > Logout

Project Listing

Filter ▾

S. No.	Department	Sector	Project	District	Total Quantity	Remaining Quantity	Add Quantity	Published By	Action
1	Culture Department	Heritage, Art & Culture	Guidance program to support Category: Services	Balod	1	0	- +	District Balod	⋮
2	Public Health and Family Welfare Department	Healthcare & Sanitation (Preventive & Curative)	Cataract Screening Camp Category: Services	Bastar	1	1	- +	District Bastar	⋮
3	Tourism Department	Environment and Sustainability	Trash Cans in Tourist Spots Category: Product	Bastar	20	14	- +	Interested: 6	⋮

Chhattisgarh Business Mode Easy

Project Listing

Filter ▾

Project Details

Department: Public Health and Family Welfare Department
Category: Services
Project Title: Cataract Screening Camp
Sector: Healthcare & Sanitation (Preventive & Curative)
District: Bastar
Location Type: Rural
Project Description: Cataract screening program to identify and reduce preventable blindness in rural populations.

District	Block Tehsil	Village / Town	Total Estimated Cost (₹)
Bastar	Jagdalpur Jagdalpur	Nagarnar	50,000

Yes, I am interested No

Figure 4.9: Company Interested Screen

- On click of **Update** button company users will be able to update the quantity on which they have shown interest whether they want to increase or decrease their quantity.

Project Listing

S. No.	Department	Sector	Project	District	Total Quantity	Remaining Quantity	Add Quantity	Published By	Action
1	Culture Department	Heritage, Art & Culture	Guidance program to support Category : Services	Balod	1	0	- +	District Balod	⋮
2	Public Health and Family Welfare Department	Healthcare & Sanitation (Preventive & Curative)	Cataract Screening Camp Category : Services	Bastar	1	1	- +	District Bastar	⋮
3	Tourism Department	Environment and Sustainability	Trash Cans in Tourist Spots Category : Product	Bastar	20	14 Interested: 6	- +	District Bastar	⋮

Project Details

Department
Tourism Department

Category
Product

Project Title
Trash Cans in Tourist Spots

Sector
Environment and Sustainability

District
Bastar

Location Type
Rural

Project Description
Provision and installation of durable, weather-resistant trash cans at high-footfall tourist locations

District	Block Tehsil	Village / Town	Available Quantity	Quantity	Estimated Unit Cost (₹)	Total Estimated Cost (₹)
Bastar	Lohandiguda Lohandiguda	Chitrakot	14	- 6 +	3,000	18,000

Update **No**

Figure 4.10: Company Update Screen

- On click of **Withdraw** button company users will be able to withdraw the project on which they have shown interest.

The screenshot shows the 'Interested Projects' section of the CSR Portal. The 'Project Listing' table contains the following data:

S. No.	Department	Sector	Project	District	Total Quantity	Remaining Quantity	Add Quantity	Published By	Action
1	Culture Department	Heritage, Art & Culture	Guidance program to support Category : Services	Balod	1	0	- +	District Balod	⋮
2	Public Health and Family Welfare Department	Healthcare & Sanitation (Preventive & Curative)	Cataract Screening Camp Category : Services	Bastar	1	1	- +	View I'm Interested Update	⋮
3	Tourism Department	Environment and Sustainability	Trash Cans in Tourist Spots Category : Product	Bastar	20	14 Interested: 6	- +	Withdraw District Bastar	⋮

The 'Withdraw Selection' dialog box displays a warning icon and asks: "Do you really want to withdraw?" with 'Yes' and 'No' buttons.

Figure 4.11: Company Withdraw Screen

NOTE: Once a company shows interest in a project, the Update and Withdraw options will remain enabled for 30 days only.

After the completion of 30 days, both the Update and Withdraw options will be automatically disabled on the CSR Portal.

4.4. Interested Projects

In the Interested Projects section, the user can view the project in which they have shown their interest and they can filter the projects by entering project name & district.

CSR Projects > Interested Projects > Logout

Interested Project Listing

Filter

Project: Search by Project Name District: --Select--

Search Reset

S. No.	Project	District	Quantity	Created By	Status
1	Desktops for School Computer Labs	Narayanpur	10	School Education Department	Open
2	Wheelchairs	Bastar	4	Public Health and Family Welfare Department	Open
3	NCD Screening Camps	Jashpur	1	Public Health and Family Welfare Department	Open
4	Wheelchairs	Dhamtari	10	Public Health and Family Welfare Department	Open
5	Trash Cans in Tourist Spots	Bastar	6	District Bastar	Open

Figure 4.12: Interested Shown Project Screen